



LEWIS AQÜÍ

LANDSCAPE + ARCHITECTURAL DESIGN, LLC
LC 26000479

DESIGN PORTFOLIO

Lewis E. Aqüí

FL RLA #6667140

ASLA, LEED AP, ISA



CONTENTS

Introduction	3
Preliminary phase drawings	4
Design development phase drawings	6
Construction documents phase drawings	9
Photos of completed residential projects	16
Photos of completed commercial and institutional projects	28
Photos of projects in progress	33
Media	36
Contact information	37



INTRODUCTION

Lewis Aqüi Landscape + Architectural Design, LLC – or “LA2d” as we call ourselves, is a boutique firm specializing in the design of unique outdoor spaces of distinction in the United States and the Caribbean. Each project we create is custom-designed, meticulously planned, and expertly executed from conceptual idea to construction completion. Discerning clients employ LA2d for our creativity, enthusiasm, integrity, professionalism, and energy we tirelessly devote to the success of every project.

LA2d employs a working passion of varied, yet related disciplines to create outdoor living spaces of superb distinction. Our working knowledge of architecture, art, engineering, urban planning, sustainable design, “green building”, and horticulture mesh together to create visually pleasing and environmentally-sound solutions. We specialize in the creation and renovation of exquisite residential estates, boutique hotels, commercial buildings, public parks, and institutional site development projects throughout Florida and the Caribbean.

President Lewis Aqüi, Florida Registered Landscape Architect # LA 6667140, established LA2d in September 2012, after collaborating successfully for over a decade as a partner in another local landscape architecture firm. We have over 3 decades of experience in refining our craft of Landscape Architecture. Whether beginning with undeveloped land requiring mitigation prior to development or renovating a historically significant estate in serious disrepair.

We have the resources and the experience to create award winning, aesthetically pleasing, and environmentally sustainable surroundings.

The professional services of LA2d include conceptual master-planning, design development preparation of contract documents, preparation of bid documents, permitting assistance, construction observation and coordination of project consultants. By carefully selecting projects, we at LA2d can assure clients with the continual personal involvement by the managing partners, ensuring design integrity and economic viability throughout the life of the project.

Many prospective clients often inquire “What is your Style?”. We have to admit that at LA2d we don’t dictate or enforce any one particular ‘style’. In enjoying our portfolio of completed projects, one will experience a cornucopia of styles ranging from classic, to modern, to fanciful... tropical, minimalist, and even bohemian. To establish the design concepts that drive our style, we study and learn the environmental attributes and constraints of the site, the architectural qualities of the structures, and most importantly the personalities and lifestyle of the clients: The important people for which we design our gardens. However, if one is compelled to put a label on our “style”, one could wholeheartedly agree that LA2d’s style is progressive, sustainable, refreshing, current, and full of integrity.

A decorative horizontal line on the left side of the slide, transitioning from green to orange, ending in a solid purple square.

PRELIMINARY PHASE DRAWINGS



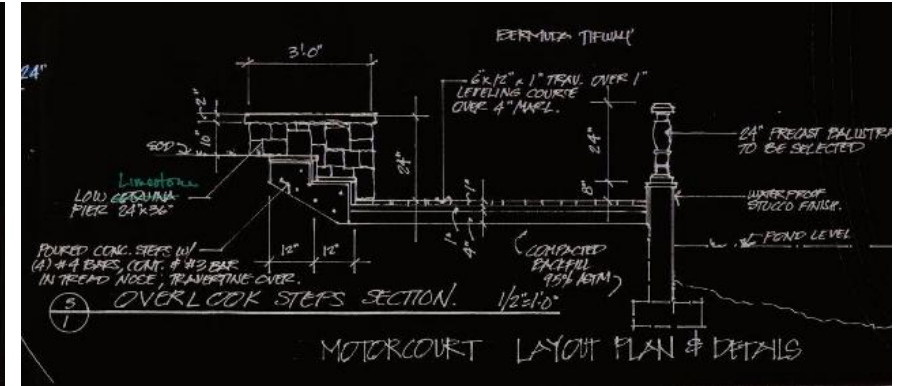
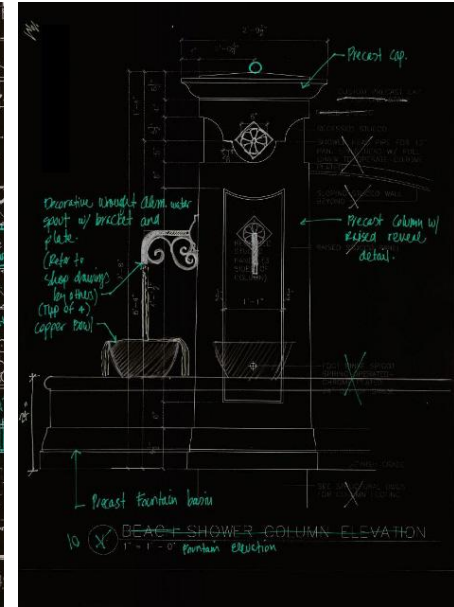
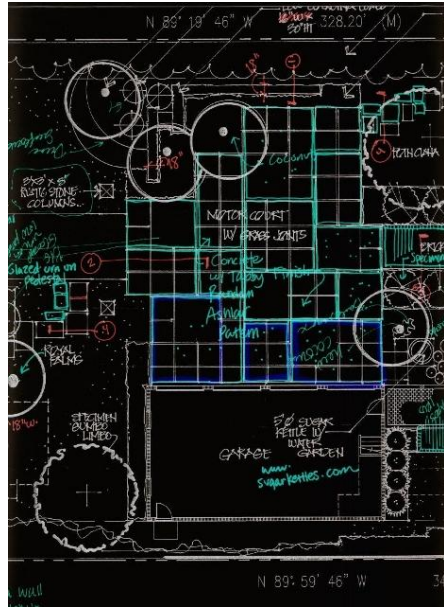
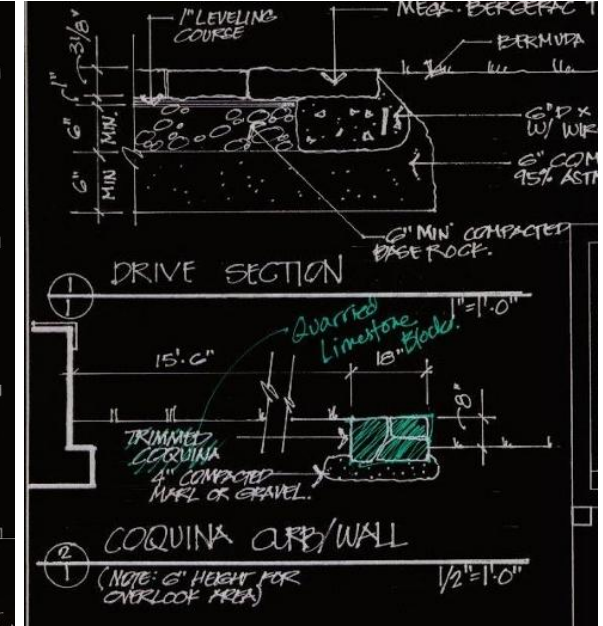
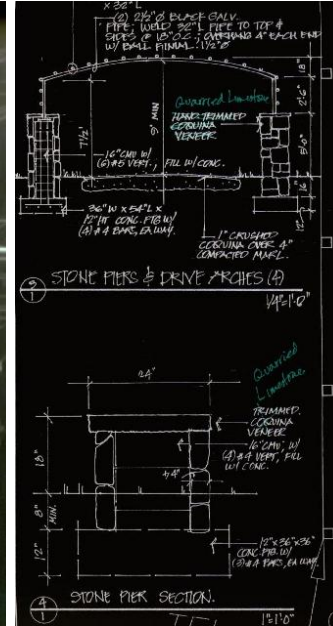
"Lewis Aquí, as the landscape architect for the Vagabond Hotel restoration, was invaluable to the overall success of the project. His knowledge of the required native plants and permit process enabled a smooth execution of this very large installation. He cares and it shows. Thank you for your fabulous work and I look forward to our next project together."

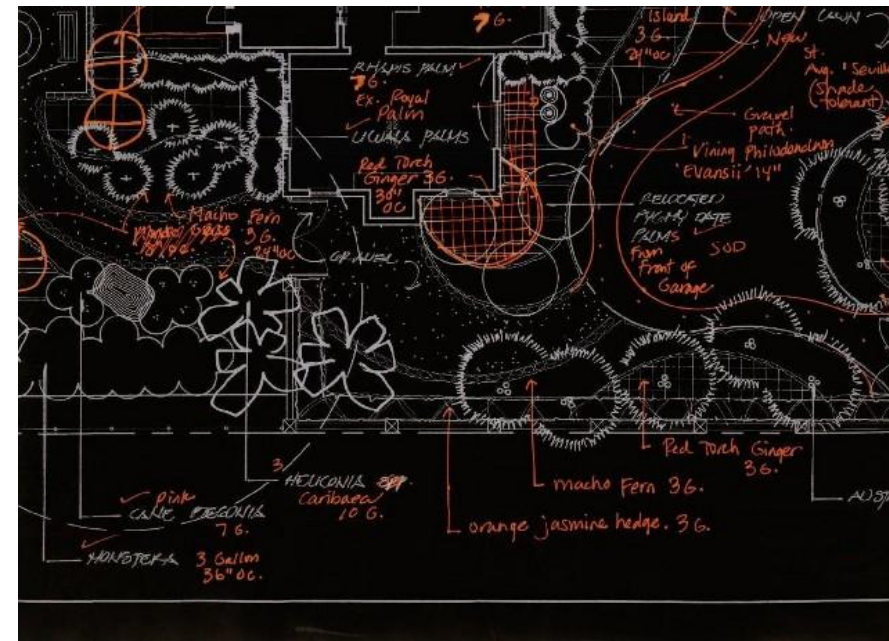
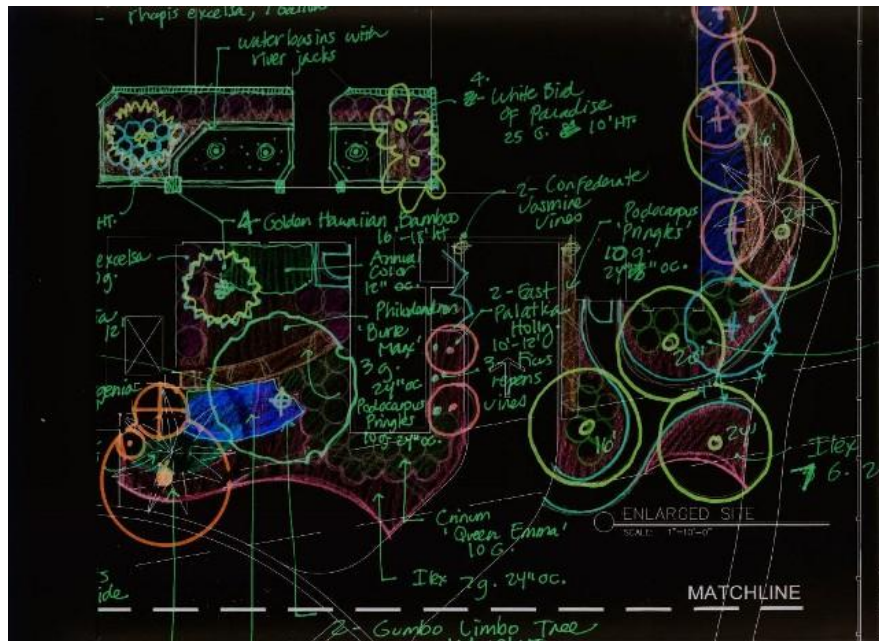
Avra Jain, Founder - The Vagabond Group





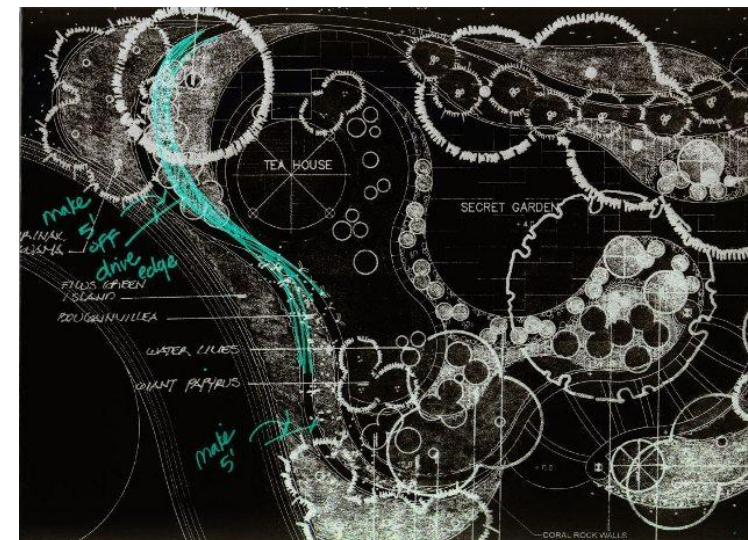
DESIGN DEVELOPMENT PHASE DRAWINGS






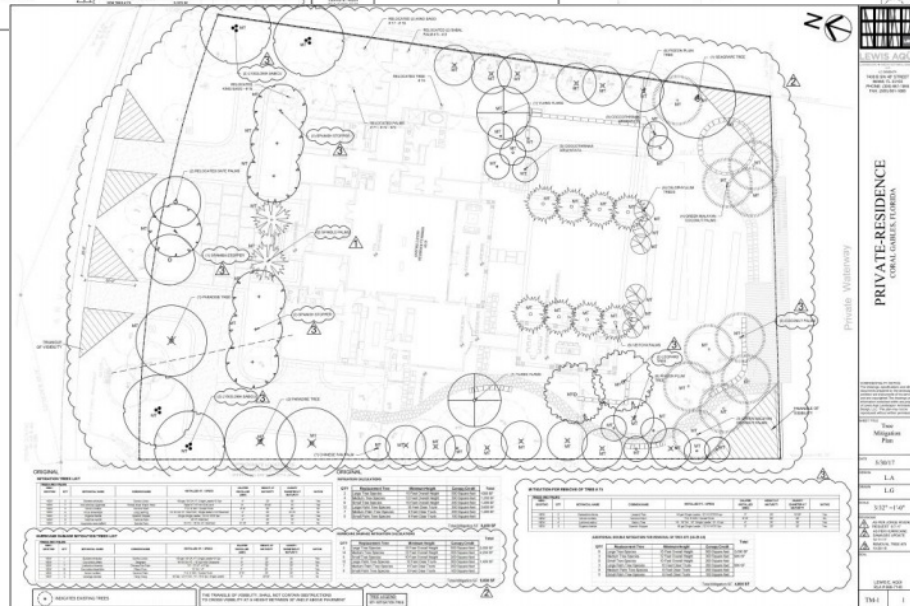
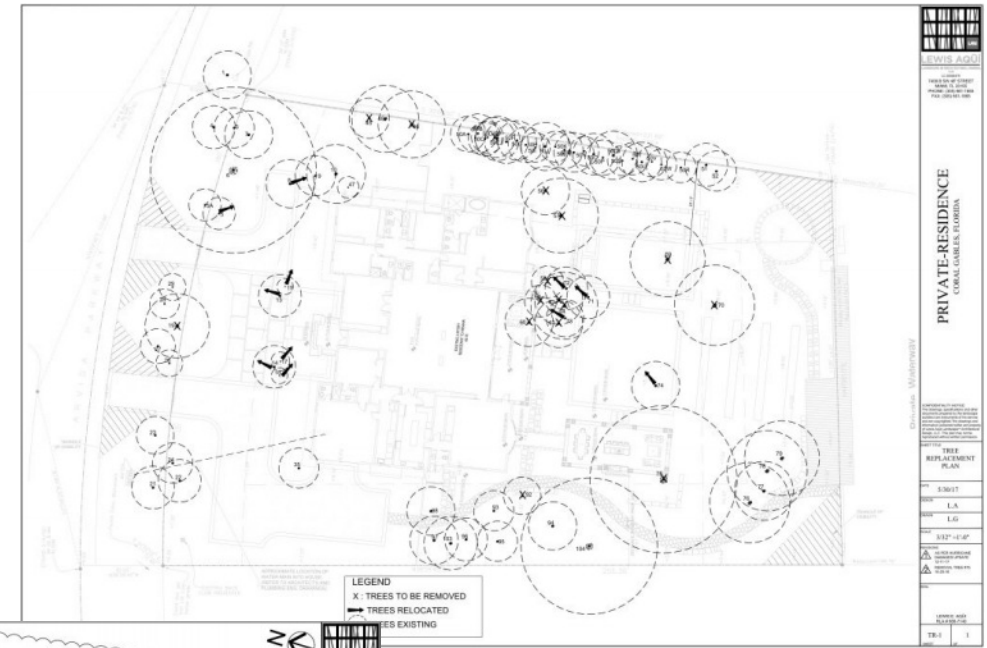
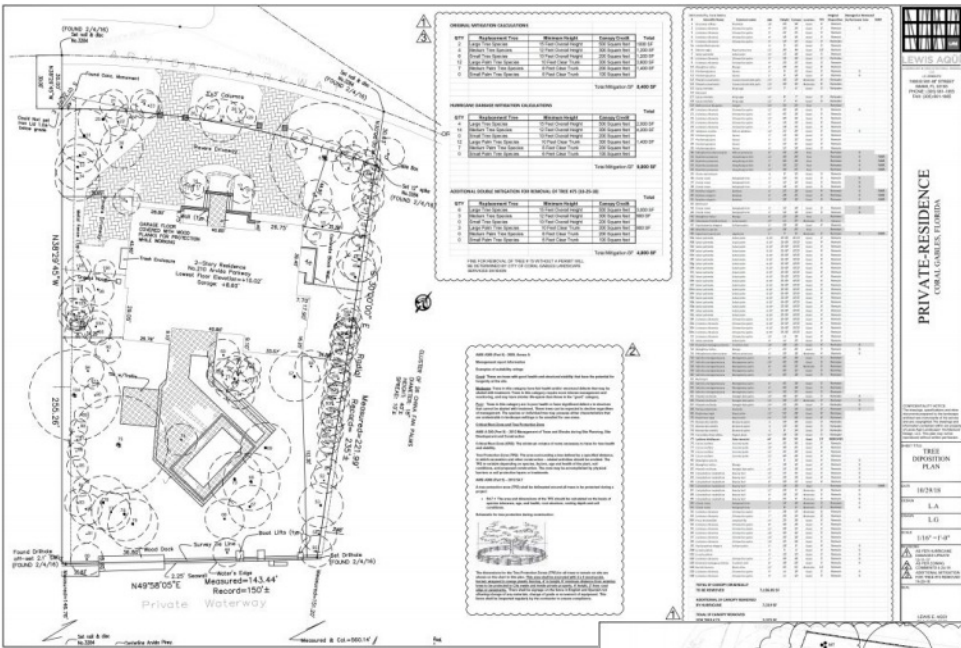
"I've had the pleasure of working with Lewis Aqüi for several projects over the years. Each project leaving me more impressed than the last. His careful and meticulous detail in designing the gardens, both spatially and in the use of hardscape, creates a beautiful quilt of textures that accentuate and strengthen the architecture"

Rafael Portuondo, President / Lead Designer - Portuondo Perotti Architects



A decorative horizontal line on the left side of the slide, transitioning from green to orange, ending in a solid purple square.

FINAL CONSTRUCTION DOCUMENTS PHASE DRAWINGS





100

SHEET TITLE

100

DESIGN

DRAWN L.G

3/32" = 1'-0"

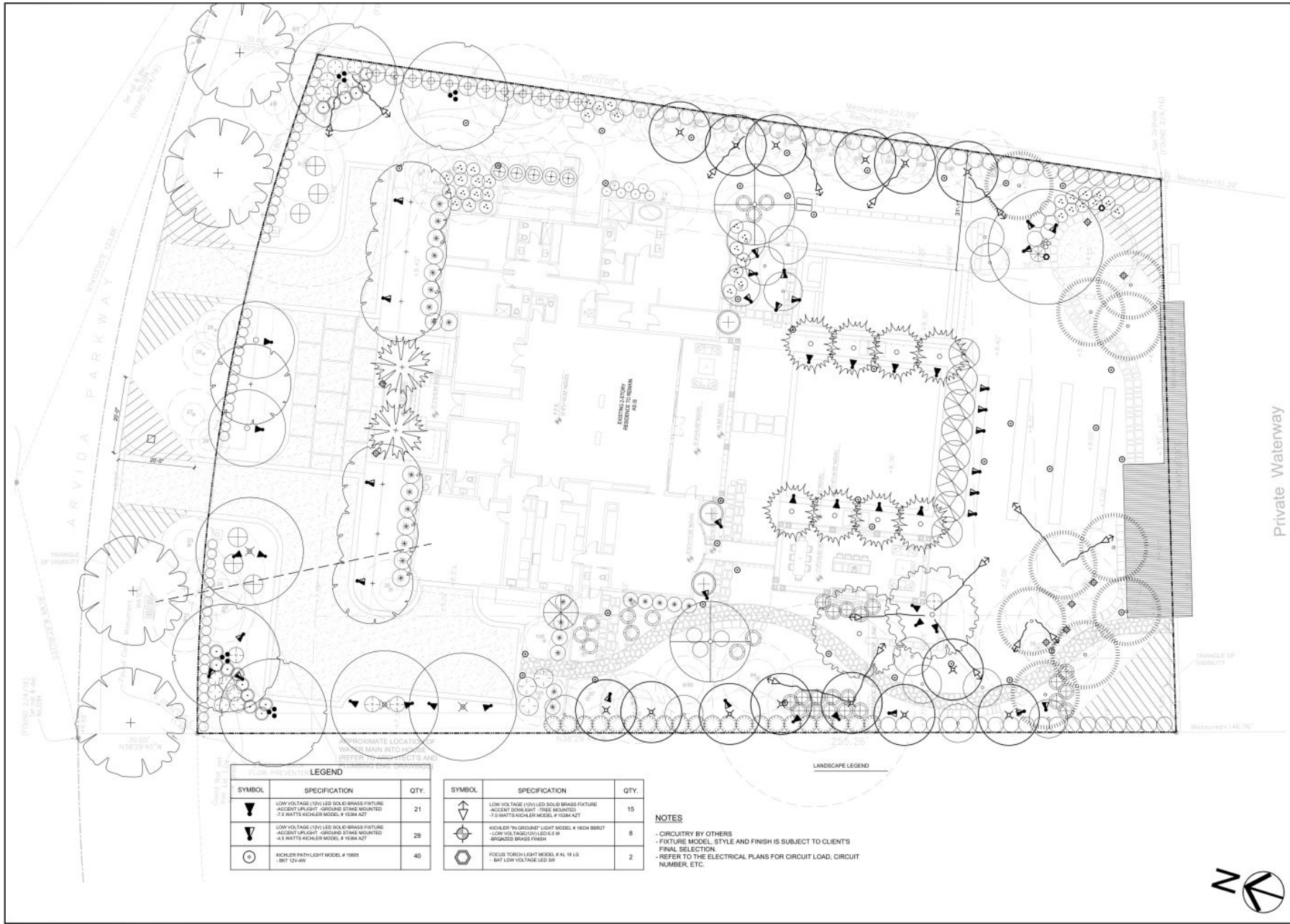
1999, 2000, 2001, 2002, 2003, 2004, 2005, 2006, 2007, 2008, 2009, 2010, 2011, 2012, 2013, 2014, 2015, 2016, 2017, 2018, 2019, 2020, 2021, 2022, 2023, 2024, 2025, 2026, 2027, 2028, 2029, 2030, 2031, 2032, 2033, 2034, 2035, 2036, 2037, 2038, 2039, 2040, 2041, 2042, 2043, 2044, 2045, 2046, 2047, 2048, 2049, 2050, 2051, 2052, 2053, 2054, 2055, 2056, 2057, 2058, 2059, 2060, 2061, 2062, 2063, 2064, 2065, 2066, 2067, 2068, 2069, 2070, 2071, 2072, 2073, 2074, 2075, 2076, 2077, 2078, 2079, 2080, 2081, 2082, 2083, 2084, 2085, 2086, 2087, 2088, 2089, 2090, 2091, 2092, 2093, 2094, 2095, 2096, 2097, 2098, 2099, 2100, 2101, 2102, 2103, 2104, 2105, 2106, 2107, 2108, 2109, 2110, 2111, 2112, 2113, 2114, 2115, 2116, 2117, 2118, 2119, 2120, 2121, 2122, 2123, 2124, 2125, 2126, 2127, 2128, 2129, 2130, 2131, 2132, 2133, 2134, 2135, 2136, 2137, 2138, 2139, 2140, 2141, 2142, 2143, 2144, 2145, 2146, 2147, 2148, 2149, 2150, 2151, 2152, 2153, 2154, 2155, 2156, 2157, 2158, 2159, 2160, 2161, 2162, 2163, 2164, 2165, 2166, 2167, 2168, 2169, 2170, 2171, 2172, 2173, 2174, 2175, 2176, 2177, 2178, 2179, 2180, 2181, 2182, 2183, 2184, 2185, 2186, 2187, 2188, 2189, 2190, 2191, 2192, 2193, 2194, 2195, 2196, 2197, 2198, 2199, 2200, 2201, 2202, 2203, 2204, 2205, 2206, 2207, 2208, 2209, 2210, 2211, 2212, 2213, 2214, 2215, 2216, 2217, 2218, 2219, 2220, 2221, 2222, 2223, 2224, 2225, 2226, 2227, 2228, 2229, 2230, 2231, 2232, 2233, 2234, 2235, 2236, 2237, 2238, 2239, 2240, 2241, 2242, 2243, 2244, 2245, 2246, 2247, 2248, 2249, 2250, 2251, 2252, 2253, 2254, 2255, 2256, 2257, 2258, 2259, 2260, 2261, 2262, 2263, 2264, 2265, 2266, 2267, 2268, 2269, 2270, 2271, 2272, 2273, 2274, 2275, 2276, 2277, 2278, 2279, 2280, 2281, 2282, 2283, 2284, 2285, 2286, 2287, 2288, 2289, 2290, 2291, 2292, 2293, 2294, 2295, 2296, 2297, 2298, 2299, 2300, 2301, 2302, 2303, 2304, 2305, 2306, 2307, 2308, 2309, 2310, 2311, 2312, 2313, 2314, 2315, 2316, 2317, 2318, 2319, 2320, 2321, 2322, 2323, 2324, 2325, 2326, 2327, 2328, 2329, 2330, 2331, 2332, 2333, 2334, 2335, 2336, 2337, 2338, 2339, 2340, 2341, 2342, 2343, 2344, 2345, 2346, 2347, 2348, 2349, 2350, 2351, 2352, 2353, 2354, 2355, 2356, 2357, 2358, 2359, 2360, 2361, 2362, 2363, 2364, 2365, 2366, 2367, 2368, 2369, 2370, 2371, 2372, 2373, 2374, 2375, 2376, 2377, 2378, 2379, 2380, 2381, 2382, 2383, 2384, 2385, 2386, 2387, 2388, 2389, 2390, 2391, 2392, 2393, 2394, 2395, 2396, 2397, 2398, 2399, 2400, 2401, 2402, 2403, 2404, 2405, 2406, 2407, 2408, 2409, 2410, 2411, 2412, 2413, 2414, 2415, 2416, 2417, 2418, 2419, 2420, 2421, 2422, 2423, 2424, 2425, 2426, 2427, 2428, 2429, 2430, 2431, 2432, 2433, 2434, 2435, 2436, 2437, 2438, 2439, 2440, 2441, 2442, 2443, 2444, 2445, 2446, 2447, 2448, 2449, 2450, 2451, 2452, 2453, 2454, 2455, 2456, 2457, 2458, 2459, 2460, 2461, 2462, 2463, 2464, 2465, 2466, 2467, 2468, 2469, 2470, 2471, 2472, 2473, 2474, 2475, 2476, 2477, 2478, 2479, 2480, 2481, 2482, 2483, 2484, 2485, 2486, 2487, 2488, 2489, 2490, 2491, 2492, 2493, 2494, 2495, 2496, 2497, 2498, 2499, 2500, 2501, 2502, 2503, 2504, 2505, 2506, 2507, 2508, 2509, 2510, 2511, 2512, 2513, 2514, 2515, 2516, 2517, 2518, 2519, 2520, 2521, 2522, 2523, 2524, 2525, 2526, 2527, 2528, 2529, 2530, 2531, 2532, 2533, 2534, 2535, 2536, 2537, 2538, 2539, 2540, 2541, 2542, 2543, 2544, 2545, 2546, 2547, 2548, 2549, 2550, 2551, 2552, 2553, 2554, 2555, 2556, 2557, 2558, 2559, 2560, 2561, 2562, 2563, 2564, 2565, 2566, 2567, 2568, 2569, 2570, 2571, 2572, 2573, 2574, 2575, 2576, 2577, 2578, 2579, 2580, 2581, 2582, 2583, 2584, 2585, 2586, 2587, 2588, 2589, 2590, 2591, 2592, 2593, 2594, 2595, 2596, 2597, 2598, 2599, 2600, 2601, 2602, 2603, 2604, 2605, 2606, 2607, 2608, 2609, 2610, 2611, 2612, 2613, 2614, 2615, 2616, 2617, 2618, 2619, 2620, 2621, 2622, 2623, 2624, 2625, 2626, 2627, 2628, 2629, 2630, 2631, 2632, 2633, 2634, 2635, 2636, 2637, 2638, 2639, 2640, 2641, 2642, 2643, 2644, 2645, 2646, 2647, 2648, 2649, 2650, 2651, 2652, 2653, 2654, 2655, 2656, 2657, 2658, 2659, 2660, 2661, 2662, 2663, 2664, 2665, 2666, 2667, 2668, 2669, 2670, 2671, 2672, 2673, 2674, 2675, 2676, 2677, 2678, 2679, 2680, 26

1000

PLA # 000-7 140	
10/10/10	10/10/10

Sheet	of
-------	----

SITE CALCULATIONS	
-TOTAL LOT AREA:	39,238 sf
-TOTAL MAIN BUILDING COVERAGE:	7,391 sf
-PROPOSED PAVILION, TERRACES, WALKWAY, DRIVEWAY MAIN BUILDING AND POOL COVERAGE:	9,329 sf
-MINIMUM REQUIRED SITE LANDSCAPE OPEN SPACE[40%]:	15,695 sf
-PROVIDED SITE LANDSCAPE OPEN SPACE:	22,518 sf
-MINIMUM REQUIRED LANDSCAPE OPEN SPACE FRONT[20%]:	3,139 sf
-PROVIDED LANDSCAPE OPEN SPACE FRONT:	4,443 sf



LEGEND		
SYMBOL	SPECIFICATION	QTY.
▲	LOW VOLTAGE (12V) LED SOLID BRASS FIXTURE ACCENT UPLIGHT - GROUND STAKE MOUNTED 7.5 WATTS RICHLER MODEL # 10885	21
▼	LOW VOLTAGE (12V) LED SOLID BRASS FIXTURE ACCENT UPLIGHT - GROUND STAKE MOUNTED 4.5 WATTS RICHLER MODEL # 10885	28
○	RICHLER PATH LIGHT MODEL # 10885 180° LOW VOLTAGE LED 3W	40

SYMBOL	SPECIFICATION	QTY.
▽	LOW VOLTAGE (12V) LED SOLID BRASS FIXTURE ACCENT DOWNLIGHT - TREE MOUNTED 7.5 WATTS RICHLER MODEL # 10885	15
⊙	RICHLER "IN GROUND" LIGHT MODEL # 1808 LOW VOLTAGE (12V) LED 6 W BRONZED BRASS FINISH	8
⊕	FOCUS TORCH LIGHT MODEL # AL 18 10 180° LOW VOLTAGE LED 3W	2

NOTES

- CIRCUITRY BY OTHERS
- FIXTURE MODEL, STYLE AND FINISH IS SUBJECT TO CLIENT'S FINAL SELECTION
- REFER TO THE ELECTRICAL PLANS FOR CIRCUIT LOAD, CIRCUIT NUMBER, ETC.



LEWIS AQUI
LANDSCAPE ARCHITECTURE
LLC
7408 S SW 48TH STREET
MIAMI, FL 33155
PHONE: (305) 661-1855
FAX: (305) 661-1865

PRIVATE-RESIDENCE
CORAL GABLES, FLORIDA

CONFIDENTIALITY NOTICE:
The drawings, specifications and other documents prepared by the landscape architect are instruments of his service and are copyrighted. The drawings and information contained within are property of Lewis AQUI Landscape Architectural Design, LLC. This plan may not be reproduced without written permission.

SHEET TITLE
Landscape Lighting Plan

DATE
10/29/18

DESIGN
L.A.

DRAWN
L.G.

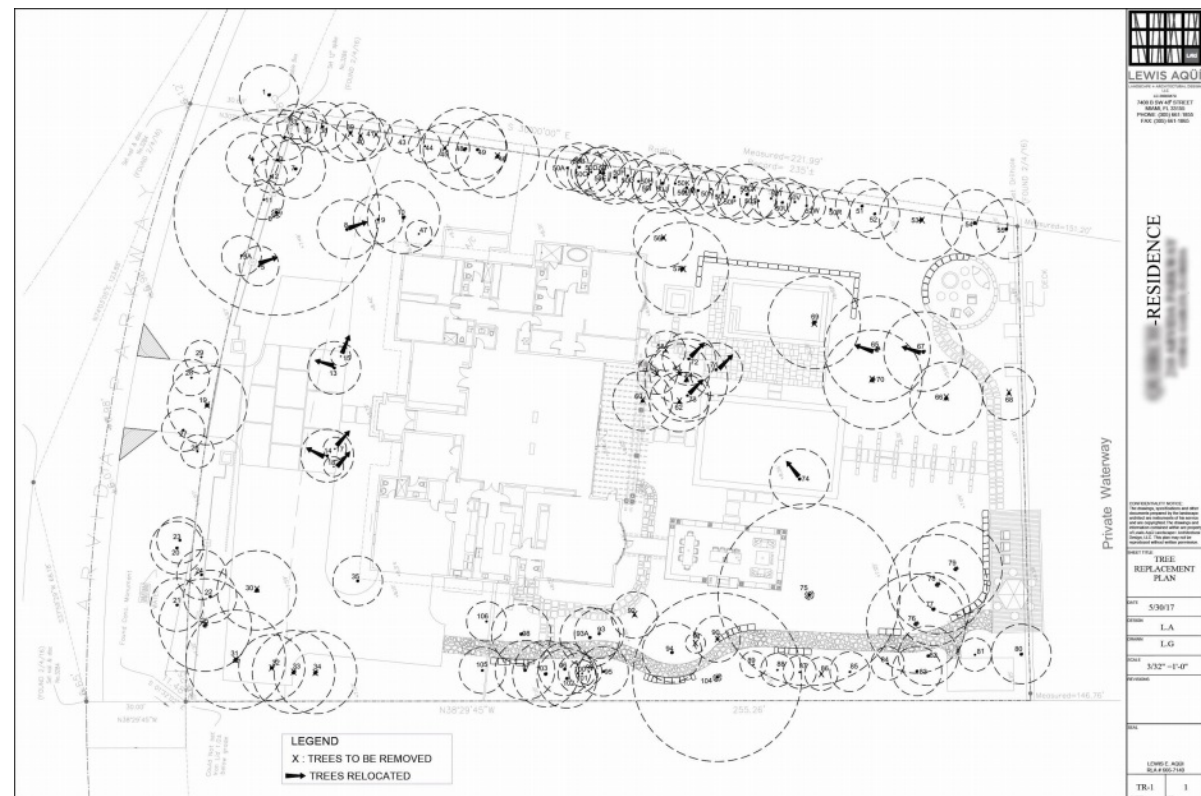
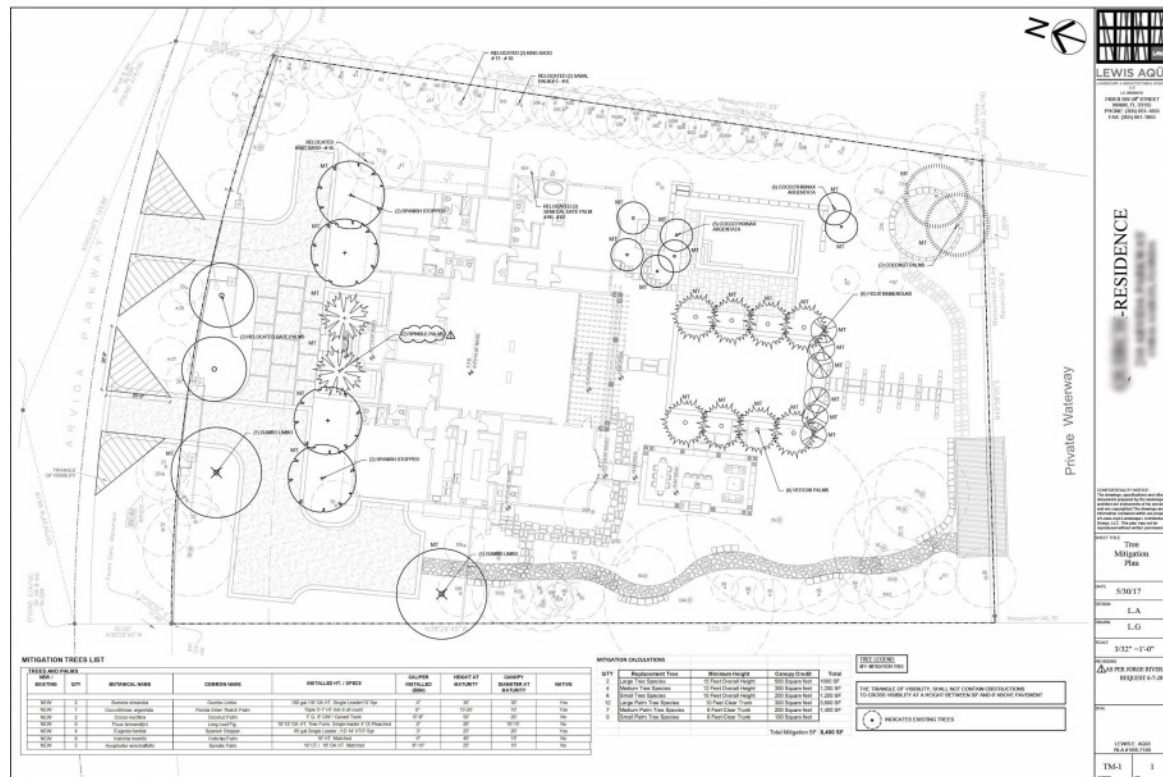
SCALE
3/32" = 1'-0"

REVISIONS

DESIGNER
LEWIS E. AQUI
RLA # 008-7143

SHEET
LL-1

OF
7





PHOTOS OF COMPLETED RESIDENTIAL PROJECT







"Lewis Aqüi is a professional in every sense of the word with high morals and character. He is hard working, imaginative, creative and responsive to his clients. When involved in a project he takes it to heart and diligently coordinate all the phases of the implementation until the project is completed satisfactorily. As a result of our first experience utilizing Lewis' landscape architectural services for our residence approximately 14 years ago, we are once again using him for a design on a second construction project. Without hesitation, we endorse and recommend Lewis Aqüi Landscape + Architectural Design. LLC".

Mr. and Mrs. Robert and Jill Hertzberg, Clients







PHOTOS OF VARIOUS COMPLETED RESIDENTIAL PROJECTS





"To anyone who is searching for Landscape Architectural Services, Lewis Aquí is the only professional you will ever need. I have worked with Lewis on 4 residential development projects in Miami Dade. He carefully assisted me through the process of Landscape Design for each project to create beautiful spaces. Lewis listens to the specific needs of each project and tailors his design accordingly. I strongly recommend Lewis and look forward to working with him on many future projects to come."

Justin Drexel-Client

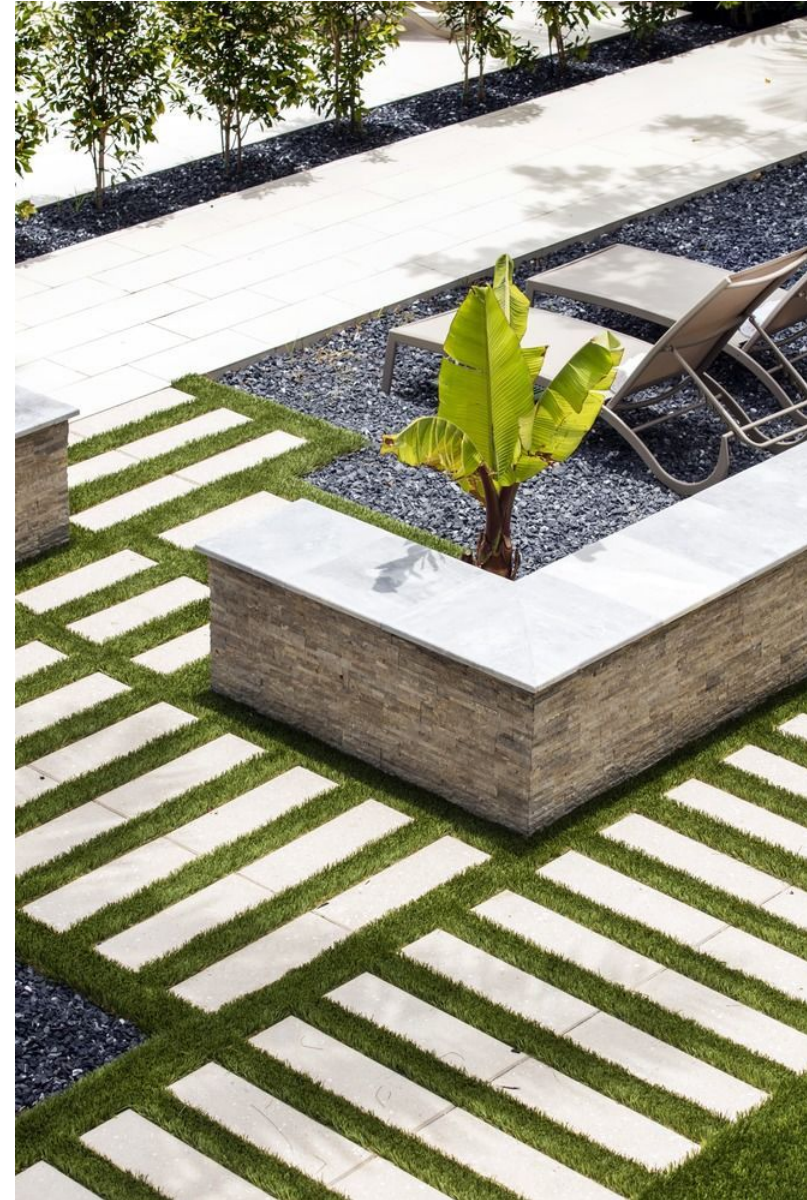








PHOTOS OF COMPLETED MISCELLANEOUS PROJECTS

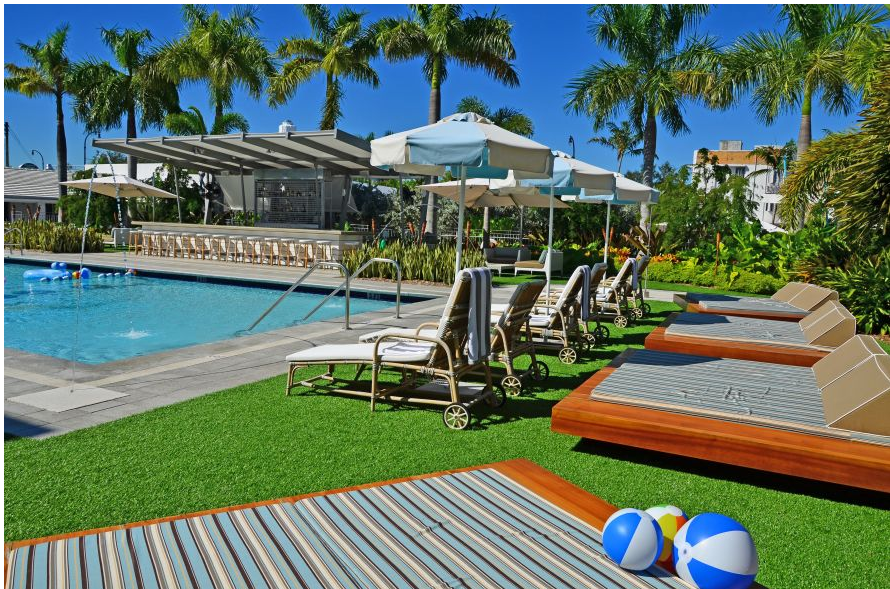






"Lewis is a master of his craft. He is an intuitive landscape architect who will create something unique to the context of the landscape. No one-size-fits-all generic planning here. He is enthusiastic and passionate about native flora and uses these sensibilities to craft a special and unique experience. We just completed a historic hotel renovation with him along the Historic Miami River Inn and look forward to working with him again."

Francine Madera, Project Manager







PHOTOS OF PROJECTS IN PROGRESS





[illegible]



CONTACT

We appreciate your interest in Lewis Aqüí Landscape + Architectural Design and would like to make it as easy as possible for you to contact us. Please feel free to reach us via phone or email using the info below.

Serving Central, South Florida & The Caribbean
Offices located in Miami and Orlando
Local Phone : 305/661-1855
lewis@lewisaquui.com